



WOODMASTER®

WOOD CUTTING SOLUTIONS

WOODMASTER® C

Carbon Steel Blades For Reliable Performance

DELIVERS STRAIGHT CUTS AT HIGH BAND SPEEDS

Engineered for demanding saw mill and resaw applications

BLADES LAST LONGER AND WEAR EVENLY

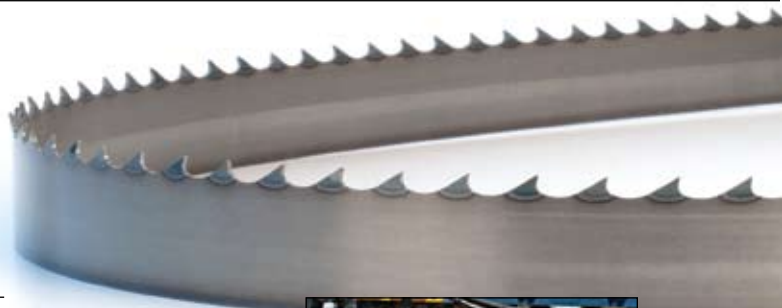
One piece carbon steel construction with induction hardened tooth tips

FASTER CUTTING AND INCREASED PRODUCTIVITY

Improved beam strength for high feed rates

WIDTH x THICKNESS		KERF INCHES	TOOTH SPACING TPI	1/2"	3/4"	7/8"	1"
INCHES	MM			2	1.3	1.1	1
1 x .035	27 x 0.90	0.072		◆	◆		
1 x .035	27 x 0.90	0.078		◆	◆		
1-1/4 x .035	34 x 0.90	0.080			◆	◆	◆
1-1/4 x .042	34 x 1.07	0.085		◆	◆	◆	◆
1-1/2 x .042	41 x 1.07	0.085			◆	◆	◆
2 x .035	54 x 0.90	0.090			◆		◆
2 x .045	54 x 1.14	0.091			◆	◆	◆

◆ = NEW SPECS



WOODMASTER® B

Precision Engineered Bi-Metal Blades

CUTS FASTER AND LONGER THAN ONE-PIECE CARBON STEEL BLADES

Two-piece steel construction provides excellent blade life

INCREASED HEAT AND WEAR RESISTANCE

Cobalt rich, high-speed steel tooth tips

INCREASED BEAM STRENGTH FOR LONGER FATIGUE LIFE

Durable spring steel backing material

DELIVERS CONSISTENT, RELIABLE PERFORMANCE

WIDTH x THICKNESS		KERF INCHES	TOOTH SPACING TPI	1/2"	3/4"	7/8"	1"	1-1/4"	VARI-TOOTH®
INCHES	MM			2	1.3	1.1	1	.78	1.0/1.3
1 x .035	27 x 0.90	0.072		◆	◆				
1-1/4 x .035	34 x 0.90	0.072			◆	◆	◆		
1-1/4 x .042	34 x 1.07	0.080			◆	◆	◆		
1-1/2 x .050	41 x 1.27	0.092				◆			
2 x .042	54 x 1.07	0.085					◆		
2 x .050	54 x 1.27	0.090						◆	
2 x .050	54 x 1.27	0.092							◆
3 x .050	80 x 1.27	0.100						◆	



WOODMASTER® CT

Carbide Tipped Blades For Optimum Performance

SMOOTH, PRECISE FINISH

Precision ground carbide tooth tips deliver the straightest cuts

ENGINEERED FOR EXTENDED LIFE AND OPTIMAL SPEED

Effectively cuts exotic or difficult to machine wood

IDEAL FOR SPECIALTY WOOD APPLICATIONS

Designed to cut moulding, hardwood flooring, wood siding, paneling and other millwork applications

EXTREME CUTTING RATES. LONGER BLADE LIFE.

MAXIMUM PRODUCTIVITY.

WIDTH x THICKNESS		KERF INCHES	TOOTH SPACING TPI	1/2"	3/4"	VARI- TOOTH® .7/1
INCHES	MM			2	1.3	
1 x .035	27 x 0.90	0.051		◆	◆	
2 x .035	54 x 0.90	0.051			◆	
2 x .035	54 x 0.90	0.065				◆
2 x .042	54 x 1.07	0.072				◆
2 x .042	54 x 1.07	0.085				◆

◆ = NEW SPECS



CHIPSWEEP®

Carbon Steel Blades With Proprietary Tooth Geometry

MINIMIZES DUST ON SAWN BOARDS

Unique tooth design reduces or eliminates secondary dedusting operations

CUTS STRAIGHTER AND LASTS LONGER AT HIGHER FEED RATES

Exceptional results in frozen wood

EXTREMELY VERSATILE

Used to cut cants, dry boards, soft and hard woods

WIDTH x THICKNESS		KERF INCHES	TOOTH SPACING TPI	3/4"
INCHES	MM			1.3
1 x .035	27 x 0.90	0.072		◆
1-1/4 x .042	34 x 1.07	0.082		◆



PALLETMASTER® C

Low Cost, Carbon Pallet Dismantling Blade

VARI-TOOTH® DESIGN IMPROVES BLADE LIFE AND REDUCES VIBRATION

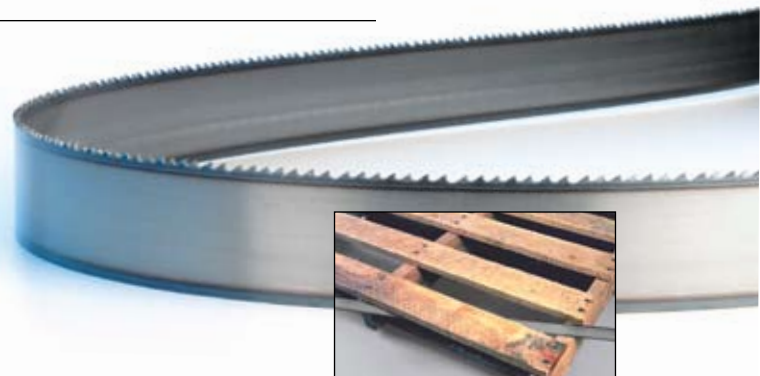
Cuts are straighter and require less force

ONE PIECE STEEL CONSTRUCTION CUTS THROUGH NAILS

Excellent fatigue life and extreme durability

HARDENED TOOTH TIPS SURVIVE AGGRESSIVE APPLICATIONS

WIDTH x THICKNESS		VARI-TOOTH®
INCHES	MM	TPI 5/8
1-1/4 x .042	34 x 1.07	◆



PALLETMASTER® B

High-Performance, Bi-Metal Pallet Dismantling Blade

BI-METAL CONSTRUCTION DELIVERS BETTER WEAR AND HIGHER HEAT RESISTANCE

Significantly outperforms traditional carbon steel blades

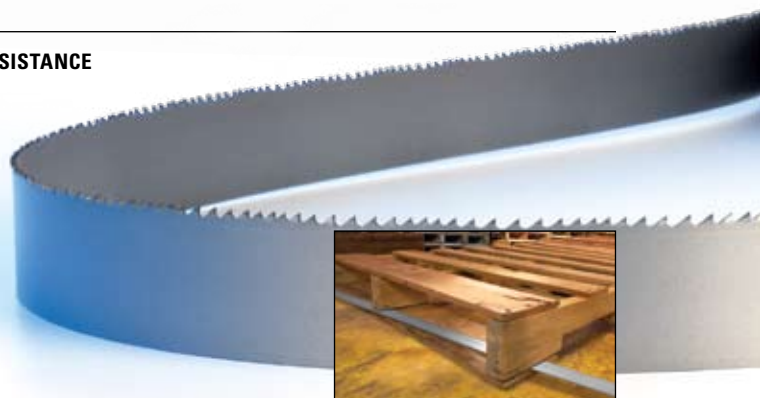
VARI-TOOTH® DESIGN EXTENDS BLADE LIFE AND REDUCES VIBRATION

Longer life against hardened nails and screws

FEWER BLADE CHANGES, HIGHER PRODUCTIVITY

Dismantle more pallets in less time to maximize efficiencies

WIDTH x THICKNESS		VARI-TOOTH®
INCHES	MM	TPI 5/8
1-1/4 x .042	34 x 1.07	◆



PALLET DISMANTLING RECIP BLADES

High-Performance Cutting For Pallet Refurbishing

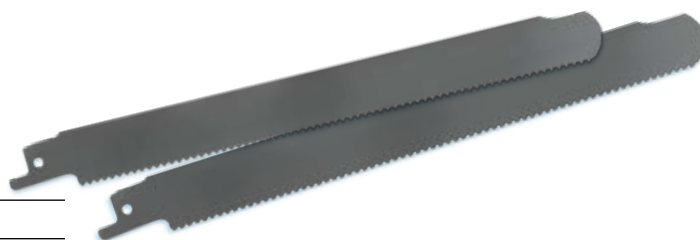
ENGINEERED FOR STRENGTH

Specially treated to enhance performance and withstand nail strikes to keep cutting fast

LONG CUTTING LIFE

Patented *TUFF TOOTH™* design and a rounded nose provide long blade life and enable easy access in tight spots

TPI	LENGTH x WIDTH x THICKNESS		250-PACK		APPLICATION
	IN	MM	PROD NO	DESC	
10	8 x 3/4 x .035	203 x 19 x .9	10729	810RPC	Dismantling Pallets
10	10 x 3/4 x .035	254 x 19 x .9	10730	1010RPC	



TENSION METER

ENABLES YOU TO CUT LONGER AND STRAIGHTER

Properly tensioned band saw blades perform better

REDUCE BLADE BREAKAGE

Monitor and adjust band tension before it is too late

DURABLE AND EASY TO USE

Lightweight cast aluminum meter with an easy to read gauge



Customer Service: 800-628-8810

Technical Support: 800-642-0010

www.lenoxtools.com

custserv@lenoxtools.com

NewellRubbermaid

EDP 3999768

301 Chestnut Street East Longmeadow, MA 01028-0504 USA

©1/2009 LENOX